



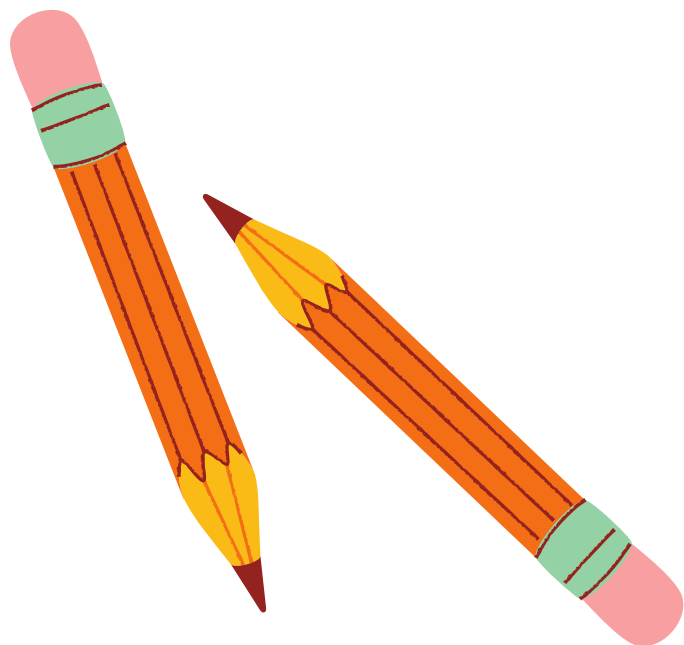
The 5 Ws of Art: Shiva and Parvati

What did we learn about this sculpture and who it depicts?

Slides can be downloaded and used as worksheets.



WHAT?



What type of stone
is this sculpture
carved from?

On what type of
structure would this
sculpture have originally
been placed?

Where on the structure would
it have
been placed?

What would be people do at
the structure to
see this sculpture?

WHO?



NOTE
You can do
additional
research for this
activity.



Who are the 4 gods
this sculpture
depicts and the
animals that rest at
their feet?

1

2

3

4

What are the top 3 things you
find interesting
about Shiva?

1

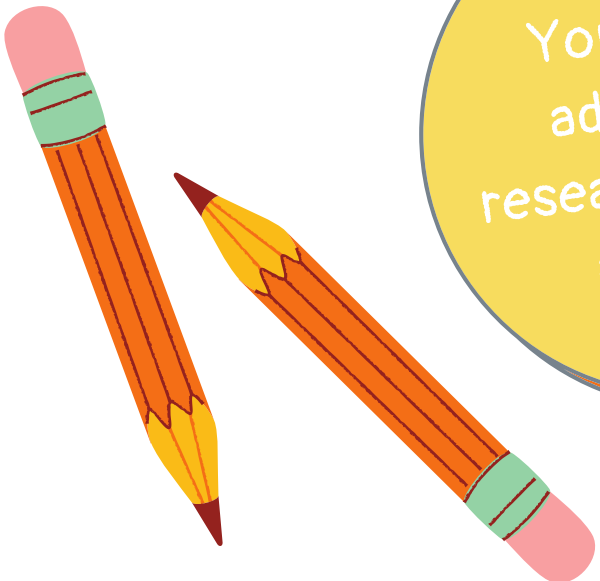
2

3

WHERE?



NOTE
You can do
additional
research for this
activity.



Where was this
object made?

Provide three interesting
facts about this
country?

Fact
1

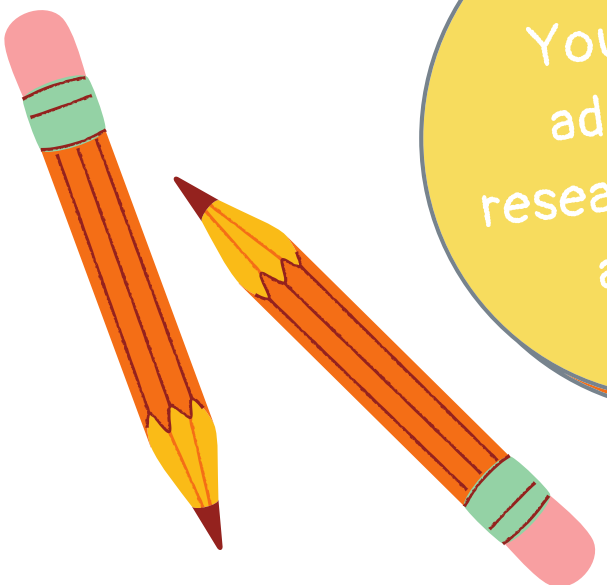
Fact
2

Fact
3

WHEN?



NOTE
You can do additional research for this activity.



When was this object made?

Provide three interesting facts about the time this object was made?

Fact 1

Fact 2

Fact 3

Challenge!

The family of Shiva, Parvati, Ganesha, and Kartikeyya are very popular in Hinduism. There are many sculptures, paintings, and prints depicting them.

Use the internet to search for examples of them. Then compare and contrast the two images.

How are these two images similar?

How are these two images different?

