



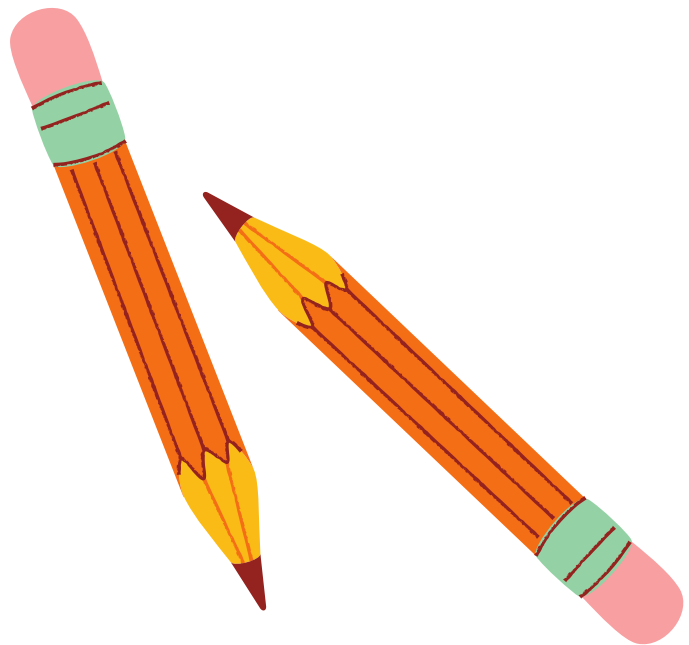
# The 5 Ws of Art: **MILITARY WATCHTOWER**

What did we learn about this object and how it was used?

Slides can be downloaded and used as worksheets.



# WHAT?



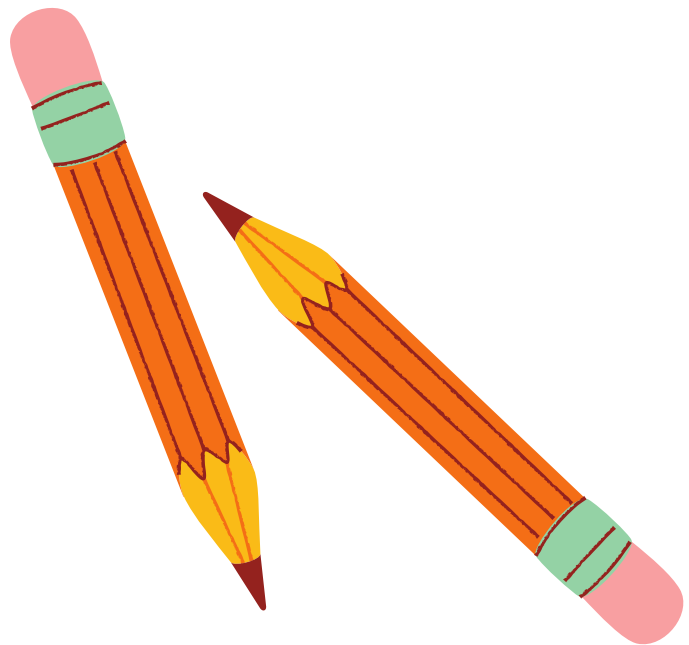
What structure is this  
object meant  
to replicate?

What kinds of animals are  
depicted at the  
bottom of the object?

What are the figures  
at the top of  
this sculpture doing?

Are they  
holding  
anything?

# WHY?



Why was this  
object placed  
in a tomb?

What are the top 3 objects  
you would want replicas  
of in the afterlife?

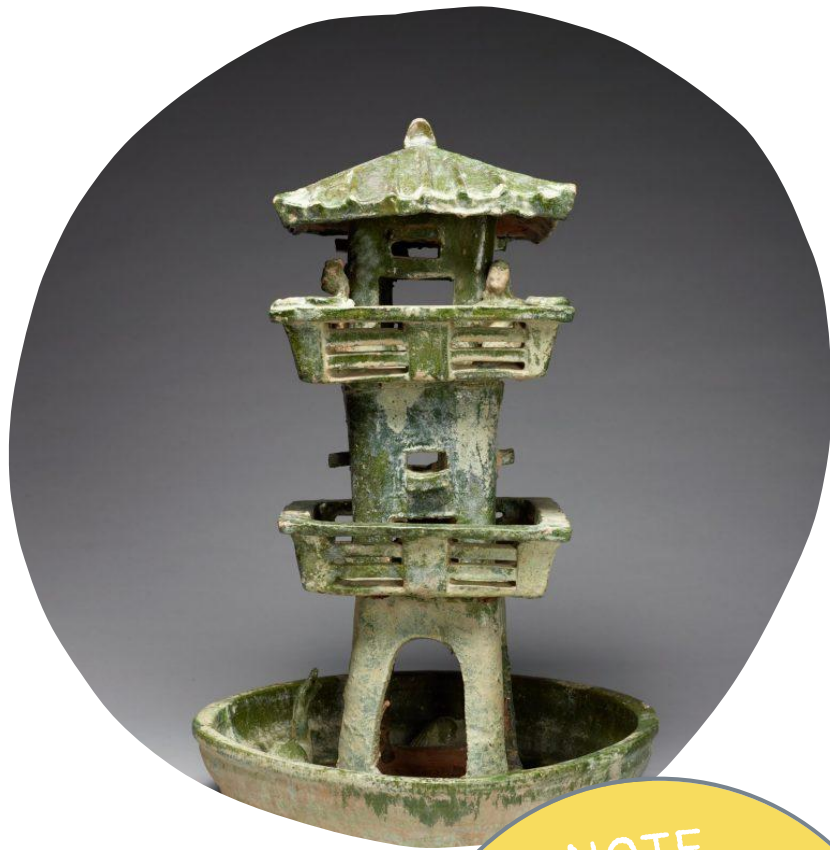
1

2

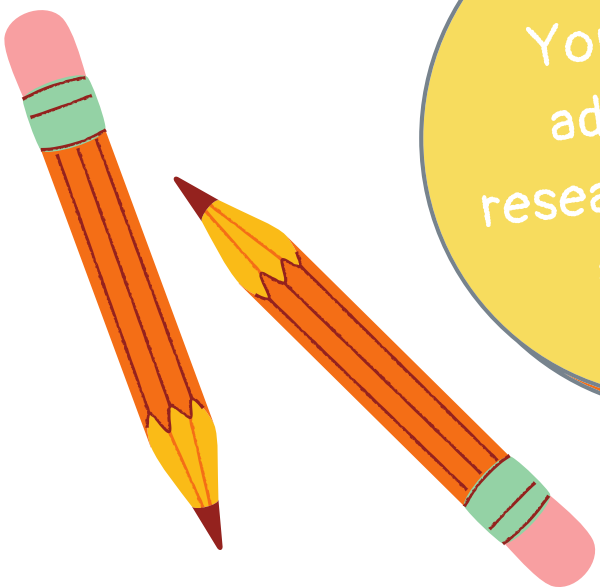
3



# WHERE?



NOTE  
You can do  
additional  
research for this  
activity.



Where was this  
sculpture made?

Provide three interesting  
facts about  
where this was made.

Fact  
1

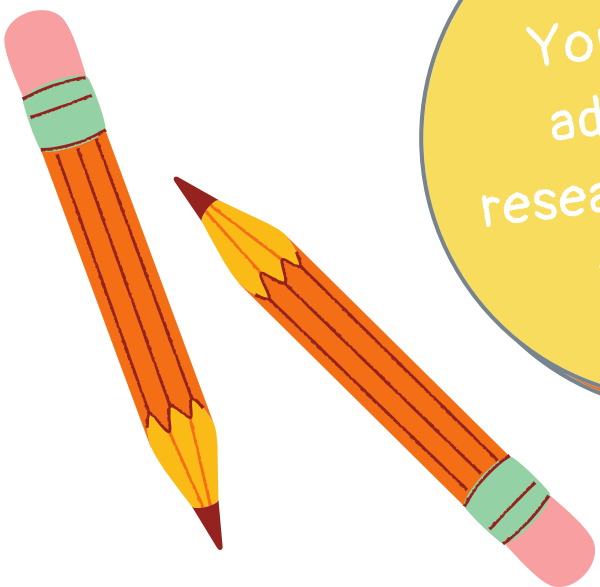
Fact  
2

Fact  
3

# WHEN?



NOTE  
You can do  
additional  
research for this  
activity.



When was this  
object made?

What dynasty ruled the  
region this object  
was made in?

Provide three interesting  
facts about  
where this dynasty?

Fact  
1

Fact  
2

Fact  
3

# Challenge!

Spirit objects called "mingqi" were very popular in ancient China. There are many different types.

Use the internet to search for examples of mingqi. Then compare and contrast the two images.

How are these two images similar?

---

---

---

---

---

---

---

---

How are these two images different?

---

---

---

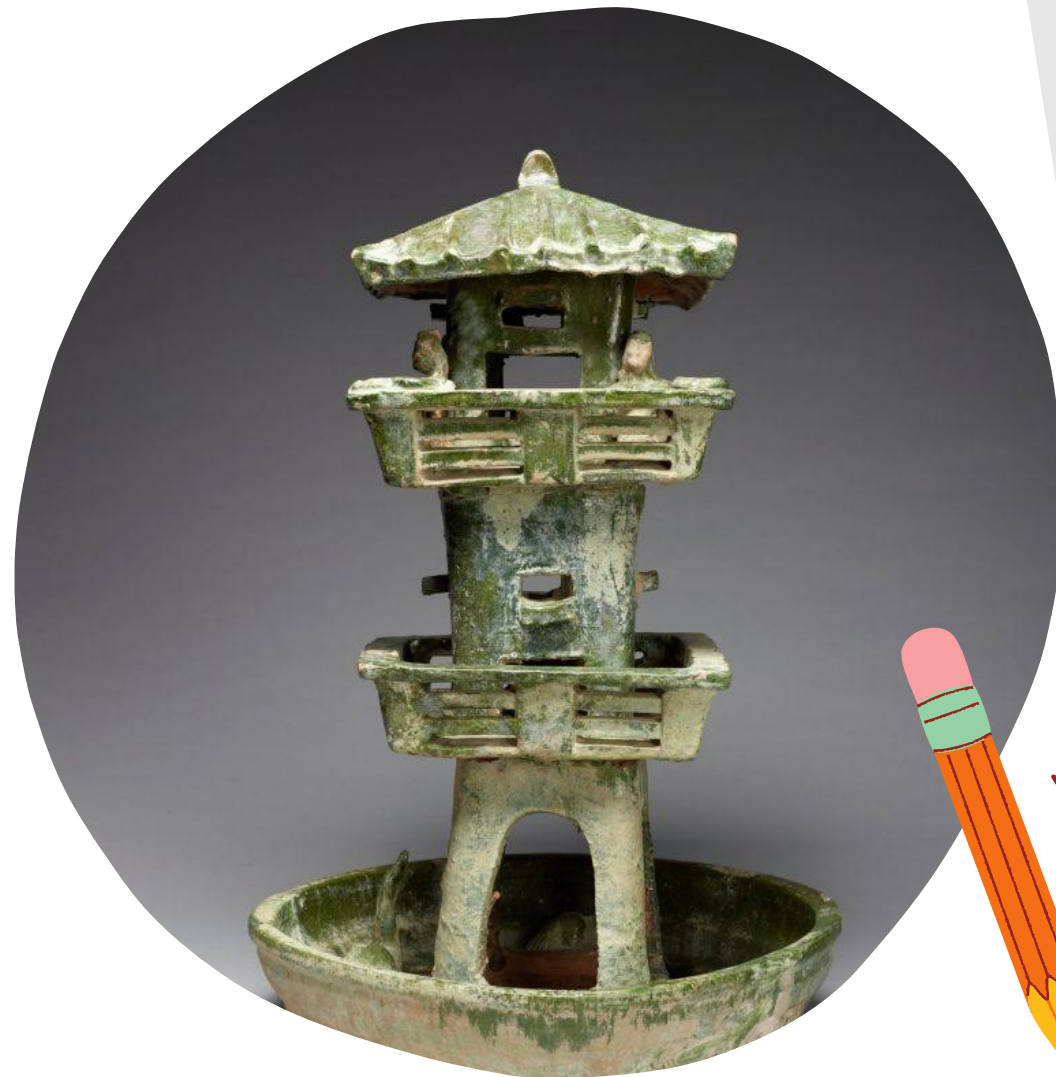
---

---

---

---

---



copy and paste  
photo  
here

